

SEE what you want



*Vision***GO** 
USER'S GUIDE

Content

| | | |
|---|---------------------------------------|----|
| 1 | About VisionGO | 3 |
| 2 | Requirements | 4 |
| | What you need to start using VisionGO | |
| | 3G/GPRS Settings | |
| 3 | Installation | 5 |
| | Step 1 : Product Activation | |
| | Step 2: Download VisionGO | |
| 4 | Quick Start | 7 |
| | Viewing the webcam | |
| | Taking/Saving snapshots | |
| | Controlling the webcam | |
| | Viewing webcam information and Help | |
| 5 | Settings | 12 |
| | Login Settings | |
| | Changing the password | |
| | Selecting the snapshot directory | |
| | Advance Settings | |
| | Upgrading Application | |
| | License Key, Legal information | |
| 6 | Exit Application | 15 |
| 7 | Supported Camera models | 16 |
| 8 | Customer Support | 17 |

1. About VisionGO

Congratulations on your purchase of VisionGO!

VisionGO is a mobile application that streams video from webcam directly to your mobile phone. With VisionGO, you can check on your loved ones, road conditions and many more, all on your mobile device at anytime!

This user guide provides instructions on how to use and configure VisionGO. It is divided into eight sections and can be referred to independently.

* The steps described and screenshots used in this user guide are based on the Nokia 6600 interface. VisionGO is compatible with all other Java-enabled mobile devices with 3G/GPRS/Wifi.

2. Requirements

Before you can start using VisionGO, you must:

Be provided with an account username and password

Download and install the application to your mobile device

Configure your network settings for GPRS/3G/Wi-Fi access

3G/GPRS Settings

You should have subscribed to a 3G or GPRS data service plan from M1, SingTel or Starhub. To configure the phone internet settings, you can either call their help center or refer to their website for configuration instructions. Please note that prepaid and postpaid users have different settings.



For Singtel, call 1626 or visit [Singtel GPRS Settings Webpage](#)



For M1, call 1627 or visit [M1 GPRS Settings Webpage](#)



For Starhub, call 1633 or visit [Starhub GPRS Settings Webpage](#)

3. Installation

Step 1: Product Activation

To begin installation, the user application license key needs to be activated on the following Internet address:

<http://visiongo.bytesquare.com>

The License Key can be found on the Certificate of Authenticity in the last page of this book.

Important:

The license key will be assigned permanently to the mobile number provided. As such, please verify and provide a valid and correct mobile number.

Once the license key is activated, the mobile phone will receive a browser message. You can retrieve the message from either the "Inbox" or the "Browser Inbox" on the mobile phone.



Fig 1 – VisionGO Website



Fig 2 – Initialization completed

Step 2 : Download VisionGO

Upon opening the message, you should see the text "VisionGO" followed by the date and time stamp of the license activation. On some phone models, you will also see an encrypted URL address.

Please proceed to access the URL address via the phone standard browser.

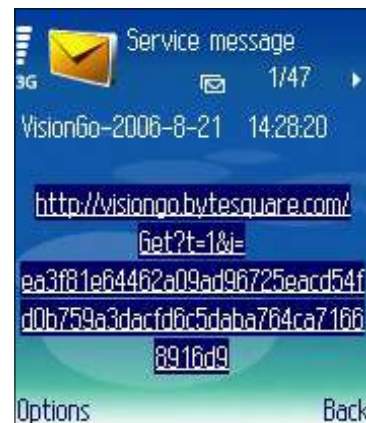


Fig 3 - VisionGO Application

The phone browser will access the encrypted URL address and authenticate the license key provided. Upon successful authentication, please proceed to download the application.



Fig 4 - Initialization completed

4. Quick Start

Start the application by selecting the VisionGO Icon.

Things to note:

While VisionGO starts to load, you may need to acknowledge the use of network access and choose the network.

On other models, it can be found under directories such as *applications*, *Java Applications* or *Games*.



Fig 5 – VisionGO Application

There are 2 important messages to note here.

Java File Connection (JSR75) supported.

Connection OK

If *Java File Connection (JSR75)* is *not* supported, you may not be able to save snapshots into your device.

If *Connection* fails, you will not be able to connect to your webcam(s) at all. Check with your mobile service providers (StarHub, M1, etc) for information on how to configure your phone's GPRS/3G networks.



Fig 6 – Initialization completed

Main Menu

As shown in Fig 7, there are 4 main menu selections to choose:

Personal Webcams

Public Webcams

Settings

Exit

Each menu selection will have a short description.



Fig 7 - The Main Menu



Viewing a Webcam

Load Webcam List

There are 2 categories of webcams – Personal Webcams and Public Webcams.

From the main menu (Fig 7), select either the Personal Webcams or Public Webcams which you would like to view.

The corresponding webcam list will then be loaded. In Fig 8, the Public Webcam List is shown. Select a webcam from the list to view it.



Fig 8 –Public Webcam List

Start Streaming

To start streaming the video, select “Start Streaming”.

A loading gauge will appear while the video starts.

During the video streaming, you may press “Stop Streaming” to end the session at any time.

Tips:
Press “*” to toggle the full-screen function.

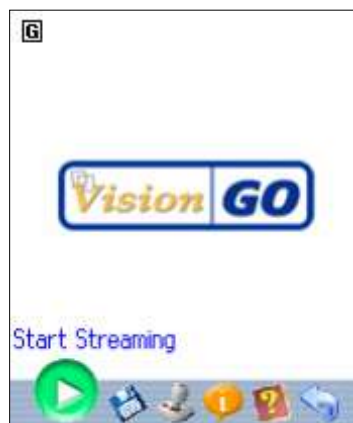


Fig 9 – The Webcam



Saving Snapshots

To save a snapshot from the streaming video, select "Save Snapshot". A confirmation box will appear to notify whether the snapshot has been saved.

By default, the snapshots will be saved to the memory card directory "E:/VisionGo/". If you want to change the save-to directory, please read the section on *Various Settings - Select Snapshot Directory*.

Tips:
Alternatively, you could press the short-cut key "#" to save a snapshot.



Fig 10 – Save a snapshot



Webcam Control

To control the webcam, select "Control Webcam".

Press the directional button or (2, 8, 4, 6) to move the webcam. To release control, press "5".

The direction which the webcam is currently moving will be shown with a green arrow.

Note:

To hide the control pad in the center, read the section on *Advance Settings*. The availability of this function depends heavily on the camera model..



Fig 11 – Controlling the webcam

View Webcam Information & Help

Select "Show Info" to view information such as the name of the webcam, country and the streaming duration.

Select "Show Help" for a brief explanation of the functionalities.



Fig 12 –Webcam information



5. Setting

There are 5 different settings as follows:

- Login Settings
- Snapshot Directory
- Advance Settings
- Upgrade Application
- License Key, Legal Info and About



Fig 13 – The Settings

Login Settings

Change your username and password here.

Check "Remember Username & Password" to save the hassle of entering your username and password every time you start VisionGO.

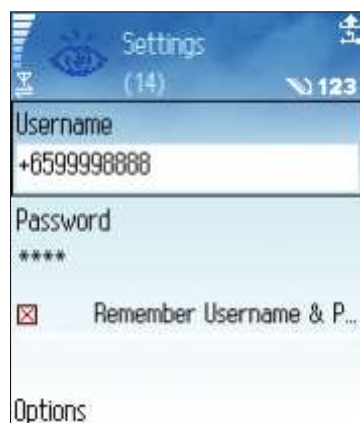


Fig 14 – Login Settings



Select Snapshot Directory

You may determine the directory where snapshots are saved to. Select the directory as shown in Fig 15. A confirmation of the directory to be used will be shown upon selection.

Note :

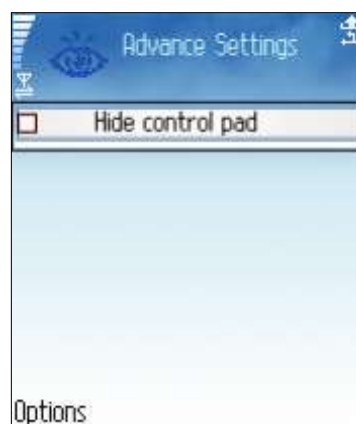
If your mobile device does not support File Connection (JSR 75), you will not be able to access your file and therefore the snapshot directory feature will not be available.



Fig 15 – Select Snapshot Directory

Advance Settings

Check "Hide control pad" to make the control pad invisible during control of webcam.



Upgrade Application

Check for upgrade of the application. If there is an upgrade, the new application will be downloaded and installed.

License Key, Legal Info and About

Other information about VisionGO – your application license key, legal information on the use of the application and About the application.



6. Exit Application

To exit VisionGO, select the exit button from the main screen.



7. Supported Phone Models

VisionGO was designed for mobile devices with the following technical specifications:

Color Screen Enabled
 J2ME Supported
 MIDP 2.0
 CLDC 1.0

In striving to give our customers the best value for their investment, we are always constantly upgrading and expanding the list of camera phones that VisionGO can support. Below is a compiled list of supported models. For the latest updated list, please visit our website or drop us an email.

Nokia

Nokia 2355
 Nokia 2855
 Nokia 3152
 Nokia 3155
 Nokia 3230
 Nokia 6111
 Nokia 6131
 Nokia 6135
 Nokia 6136
 Nokia 6152
 Nokia 6155
 Nokia 6230
 Nokia 6230i
 Nokia 6235
 Nokia 6255
 Nokia 6260
 Nokia 6265
 Nokia 6280

Nokia 6600
 Nokia 6620
 Nokia 6630
 Nokia 6670
 Nokia 6680
 Nokia 6681
 Nokia 6682
 Nokia 7370
 Nokia 7600
 Nokia 7610
 Nokia 7700
 Nokia 7710
 Nokia 9210c
 Nokia 9300
 Nokia 9300i
 Nokia 9500
 Nokia E60
 Nokia E61
 Nokia N70
 Nokia N71

Nokia N80
 Nokia N90
 Nokia N91

Motorola

Motorola 680(i)
 Motorola A1000
 Motorola A760
 Motorola A780
 Motorola i730
 Motorola FOMA M1000
 Motorola L7

Samsung

Samsung D600
 Samsung Z540

Siemens BenQ

Siemens C65
Siemens CX65
Siemens M65
Siemens S65
Siemens SK65
Siemens ST60

Sony Ericsson

Sony Ericsson F500
Sony Ericsson J300
Sony Ericsson K300
Sony Ericsson K500i
Sony Ericsson K600
Sony Ericsson K700i
Sony Ericsson P802
Sony Ericsson P900
Sony Ericsson P908
Sony Ericsson P910
Sony Ericsson S700
Sony Ericsson S750i
Sony Ericsson V600
Sony Ericsson V800
Sony Ericsson V802
Sony Ericsson W550i
Sony Ericsson W800i
Sony Ericsson Z500i
Sony Ericsson Z800
Sony Ericsson Z1010

Palm

Palm LifeDrive
Palm Treo 600
Palm Treo 650V
Palm Tungsten C
Palm Tungsten E
Palm Tungsten E2
Palm Tungsten T3
Palm Tungsten T5
Palm Zire 72

Others

Dopod phones
Xda O2

8. Customer Support

For more information on the latest developments and update, please contact our support team:

Singapore

BYTESQUARE TECHNOLOGY PTE. LTD.
National University of Singapore,
Blk E4, Engineering Drive 3,
#02-12Y, Singapore 117576
Phone : (65) 6775 6002
Website : <http://www.bytesquare.com>

© Copyright Bytesquare Technology Pte Ltd 2006
All rights are reserved. No part of the document
may be photocopied, reproduced, or translated to
another language without the prior written consent
of Bytesquare Technology Pte Ltd.

First edition published in Nov 2006.
Printed in Singapore.

Notice

The information contained in this document is sub-
jected to change without notice and should not be
constructed as a commitment by the Bytesquare
Technology Pte Ltd.

Bytesquare Technology assumes no responsibility
for any errors that may appear in this document,
nor does it make expressed or implied warranty
material, including, but not limited to, the implied
warranties of merchantability and fitness for a par-
ticular purpose.

Bytesquare Technology shall not be liable for inci-
dental or consequential damages in connection
with, or arising out of the furnishing, performance,
or use of this document and the program material
which it describes.

THE FOLLOWING DESCRIBES THE TERMS ON
WHICH BYTESQUARE OFFERS YOU ACCESS TO
OUR SERVICES.

This User Agreement ("Agreement") is a contract
between you and ByteSquare, Inc. and applies to
your use of the VisionGO service. If you do not
agree to be bound by the terms and conditions of
this Agreement, please do not use or access our
Services.

You must read, agree with, and accept all of the
terms and conditions contained in this Agree-
ment and the Privacy Policy, which include those
terms and conditions expressly set out below and
those incorporated by reference, before you may
become a user of VisionGO. We strongly recom-
mend that, as you read this Agreement, you also
access and read the information contained in the
other pages and websites referred to in this docu-
ment, as they may contain further terms and con-
ditions that apply to you as a VisionGO user.

We may amend this Agreement at any time by
posting the amended terms on our site. Except as
stated below, all amended terms shall be effec-
tive 30 days after they are initially posted on our
site.

In this Agreement, "you" or "your" means any
person or entity using the Service ("Users").
Unless otherwise stated, "VisionGO," "we" or
"our" will refer collectively to ByteSquare, Inc.

This Agreement was last modified on October 14,
2006.

You acknowledge and agree that as between you
and ByteSquare and its licensors, the Content,
Product and Service, including its selection, ar-
rangement, and associated "look and feel" of the
application is owned by ByteSquare and is pro-
tected by their rights under copyright, trademark,
patent, and/or other applicable laws, and any
misuse of the Content will violate such laws and
these Terms of Use. You agree not to copy,
frame, download, modify, sell, assign, distribute,
license/sublicense, reverse engineer, or create
derivative works. You may, however, view the
Content, use the Product, and access the Service,
solely for your personal, non-commercial use.
ByteSquare reserve all rights in and to the Con-
tent, Product and Service not expressly granted.

Under no circumstances shall ByteSquare be li-
able to any user on account of that user's use, or
misuse of, or reliance, or inability to use, or from
the interruption, suspension, or termination of
the Service. Arising from any claim relating to this
agreement or the subject matter hereof such
limitation of liability shall apply to prevent recov-
ery of direct, indirect, incidental, consequential,
special, exemplary, and punitive damages
whether such claim is based on warranty, con-
tract, and tort (including negligence).

Mobilize your world

Bytesquare Technology Pte Ltd

National University of Singapore, Blk
E4, Engineering Drive 3, #02-12Y, Sin-
gapore 117576

Website: www.bytesquare.com